



Mud Chaser Team Overview and Instructions:

- Team is comprised of **Captain + 3-4 additional volunteers**
- Rainfall above ½” activates a team member to observe at sampling points

Experience will shape this. If heavier rainfall amounts are needed to have an impact, then team can reserve activation for higher rainfall events. Also- cumulative rain totals, severity of storm events, and snow melt will affect when a team chooses to go monitor.

Teams can organize their own schedule.

- Ex: one member is “on call” for each week of the month. Volunteers can take turns and cover for each other. Captain coordinates.
- OWPP staff may also contact Captains occasionally to activate an observation, but Captain and team are asked to take the initiative on this.

Sampling will take place within 12 hours of a rain event (suggested).

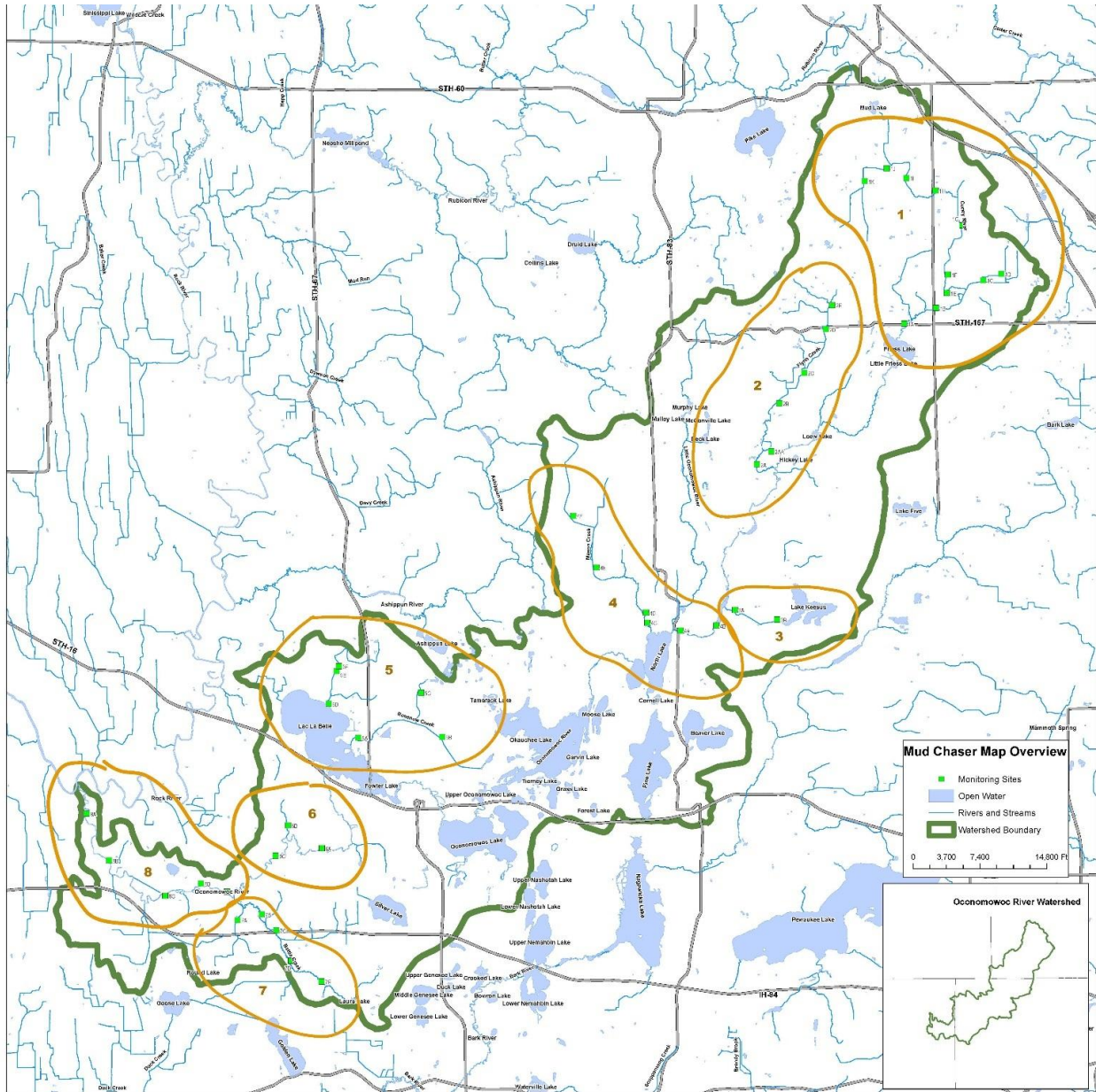
Each captain gets:

- Rain gauges
- safety vests
- Sampler
- Collection bottles
- Map,
- Secchi column
- Recording chart

Materials will be shared among team. Additional materials will be provided as needed.

Recommend: ***photograph significant sediment incidents*** and email to Darrell Smith, Watershed Ag Coordinator, naturalo@sbcglobal.net, Cell: 414-313-4323 (text is great too).

- Each month: ***Photograph*** or ***Scan Report*** and email to Darrell Smith at naturalo@sbcglobal.net and Tom Steinbach at tsteinbach@conomowoc-wi.gov
- Maps may be adjusted over time as some locations may be removed/consolidated.



Source: Tom WEDR, Milwaukee